

EEG ELECTRODE CAP SYSTEMS AND CAPS

Systems

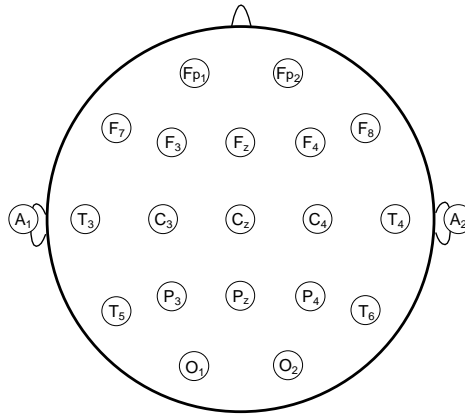
BN-EEGCAP-SYS BioNomadix Wireless EEG Cap System  
CAP100C Electrode Cap System (Touchproof)

Cap Only

BN-CAP-SMALL CAP-INFANT  
BN-CAP-MEDIUM CAP-SMALL  
BN-CAP-LARGE CAP-MEDIUM  
CAP-LARGE



Electrode Cap System (CAP100C shown)



International 10-20 electrode montage



Cap only (CAP-MEDIUM shown)

EEG CAP SYSTEMS

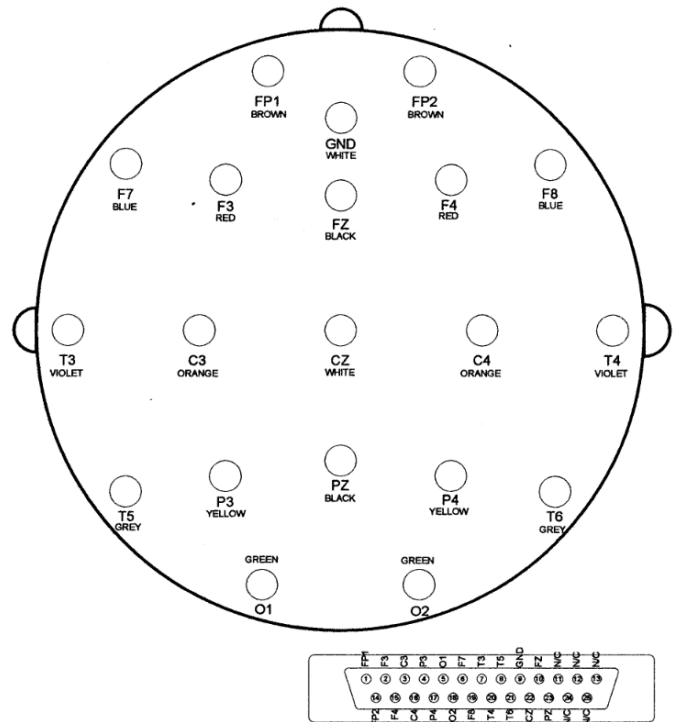
EEG Cap Systems include a medium EEG cap with accessories, plus mating cable to interface an EEG amplifier or MP36R/36R unit. The medium electrode cap fits most subjects over age five; infant, small, and large caps are also available; Systems ship with one medium cap (no substitutions).

The fabric cap has recessed tin electrodes attached to the Lycra-type fabric. The electrodes are pre-positioned in the International 10-20 montage (shown above). Since leads are available for all electrodes, unipolar or bipolar montage recordings can be obtained. The electrode cap comes with two ground electrodes, and can also be used for evoked potential investigations (such as ABR). When the electrode cap is in place, EEG recording gel is injected into each electrode (via a central gel access hole) with a blunt-tipped syringe.

Leads from the electrode cap terminate in 1.5 mm female Touchproof sockets, which connect to inputs on

- EEG100C electroencephalogram amplifier
  - To connect to older model EEG100A or EEG100B, add connection cable CBL201.
- BN-EEG2 BioNomadix Wireless EEG transmitter/receiver set
  - See BioNomadix® Product Sheet for more information on BioNomadix® hardware.
- MP3X data acquisition unit via shielded electrode interface cable SS1LA

ELECTRODE PLACEMENT AND CONNECTOR PIN OUT



**EEG CAP ONLY**

Lycra-type fabric cap with recessed tin electrodes pre-positioned in the International 10-20 montage (shown above). Additional or replacement caps are available in a variety of sizes. Caps include a ribbon cable for connection to a cap system.

**CAP SYSTEM SPECIFICATIONS**

- Components: 1 x medium cap with 19-pin ribbon cable (see CAP-SIZE Specs)  
 1 x mating cable with 1.5 mm Touchproof connectors  
 2 x earclip reference electrodes  
 1 x blunt-tipped syringe  
 1 x EEG recording gel  
 1 x chest harness (holds cap in place)  
 1 x liquid soap (to wash cap after use)
- Interface: EEG100C (add CBL201 adapter for older EEG100A or EEG100B)  
 BN-EEG2  
 MP36/36R system via SS1LA adapter

**CAP SIZE SPECIFICATIONS**

- Sizes: CAP-INFANT 45-50 cm  
 BN-CAP-SMALL CAP-SMALL 50-54 cm  
 BN-CAP-MEDIUM CAP-MEDIUM 54-58 cm  
 BN-CAP-LARGE CAP-LARGE 58-62 cm

Material: Lycra

Cable: Ribbon cable from cap to 19 Touchproof 1.5 mm sockets  
 Length: BN-CAP-SIZE 25 cm or CAP-SIZE 100 cm

| 100 cm           | WIRE COLOR | RED TIP |
|------------------|------------|---------|
| <b>WHITE TIP</b> |            |         |
| Fp1              | Brown      | Fp2     |
| F3               | Red        | F4      |
| C3               | Orange     | C4      |
| P3               | Yellow     | P4      |
| 01               | Green      | 02      |
| F7               | Blue       | F8      |
| T3               | Violet     | T4      |
| T5               | Gray       | T6      |
| Gnd              | White      | Cz      |
| Fz               | Black      | Pz      |

Interface: Cap System BN-EEGCAP-SYS or CAP100C